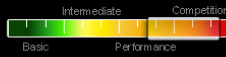


MERU

Sophisticated performance



WINNING PERFORMANCE AND HANDLING

We designed the MERU for record breaking cross country flights, and top-level competitions. An aspect ratio of 6.9 combined with a sophisticated two-liner construction make the MERU the perfect glider for expert pilots to get the most out of their flying day. The MERU has the handling that UP is known for; direct, sharp and fun to fly. The MERU's agility and communication mean that the pilot will find the thermal faster, and climb more efficiently. Complex internal structure combined with two-liner pitch control make the MERU very stable at speed, with awesome performance into a headwind.

While flying it you feel that every little piece of lift is converted into height, while the glider searches out more lift. With optimized attachment points, 84 cells, and a super clean leading edge the MERU is a true thermal surfer.

2020 edition: This model is now also equipped with our popular snap-lock break handle as well as our C-steering handles.

- ✓ Rear-riser control system, to work the AOA independently left and right, and keep the speed bar at pulley-to-pulley level even through turbulence
- ✓ New Generation "Shark nose" Aerofoil
- ✓ Double 3D panel shaping
- ✓ Leading Edge 3D negative panel shaping for a cleaner and stiffer leading edge
- ✓ UP low-drag line attachment points on the canopy
- ✓ Mini ribs along trailing edge
- ✓ Upper and lower skin rods for collapse resistance
- ✓ Long FSS (Front Section Support system) long rods
- ✓ BTS brake tensioning system
- ✓ Precise design of risers with different accelerator travel of central and external parts of the wing
- ✓ Unsheeted lines of low diameter to reduced line drag
- ✓ Swept back wingtips for better handling and improved climbing

MORE INFO

Controlling the MERU with the B-Risers is intuitive, and effective, allowing the pilot to keep the speed-bar engaged with confidence, arriving at the next thermal higher and faster. The speed-bar pressure is light allowing for less fatigue, and longer flying days.

Durable, lightweight materials combined with an intricate design make the MERU our most sophisticated glider. We have been designing and revising our two-liner prototypes for years, patiently working to produce the best possible XC/competition glider, its finally here, the MERU. Need help finding the right size for you? [Click here](#)

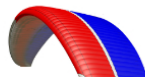
Changed scope of delivery from 01.01.2023!

Included in the delivery: Parasleeve², riser bag, compression strap, UP gift, Skytex repair patche, e-Manual. Backpack can be ordered optionally!

[Read more about the UP backpack here](#)

STANDARD COLOURS

MERU





limeblack/white

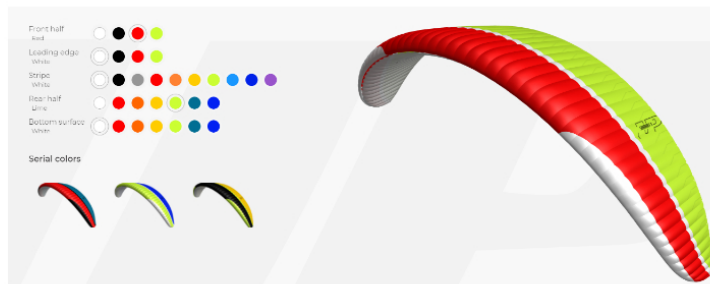


redwhite/blue



whiteblack/orange

CUSTOMIZE YOUR PARAGLIDER



TECHNICAL DATA

SIZE	S/M	M	L
Surface area flat (m2)	23,4	25,1	26,5
Surface area projected (m2)	20,0	21,5	22,8
Flat span (m)	12,7	13,2	13,5
Projected span (m)	10,4	10,7	11,0
Flat aspect ratio	6,9	6,9	6,9
Projected aspect ratio	5,3	5,3	5,3
Chambers/cells	84	84	84
Total line length incl. Brake (m)	212	220	227
Total # of lines incl. Brake	226	226	226
Glider weight (kg)	5,2	5,5	5,8
Category LTF/EN	D	D	D
Optimal takeoff weight (kg)	96-98	106-108	116-120
Takeoff weight (kg)	90-105	100-115	110-130

Need help finding the right size for you? [Click here](#)

MATERIALS

Location	Material
Top surface front	Porcher Skytex 32 Universal
Top surface thin stripe	Porcher Skytex 38 Universal
Top surface broad stripe	Porcher Skytex 27 Universal
Top surface rear	Porcher Skytex 27 Classic
Bottom surface front	Porcher Skytex 27 Classic
Cell walls	Porcher Skytex 32 Hard, Skytex 27 Hard
Gallery lines	Liros DC 35/60/100 (Dyneema unsheathed) / Edelrid 8000U-070/50 (Aramid unsheathed)
Middle lines	Liros DC 60/100/161/200/201 (Dyneema unsheathed) / Edelrid 8000U-090/070/050 (Aramid unsheathed)
Main lines	Liros DC161/200/300 (Dyneema unsheathed) / Edelrid 8000U-230/190/130 (Aramid unsheathed)
Brake lines	Edelrid 7950-150 / Edelrid 8000U-090/-070 / Edelrid 8000U-090, (Aramid unsheathed), Liros DC 35

porcher industries
CONFIDENCE MAKES THE DIFFERENCE



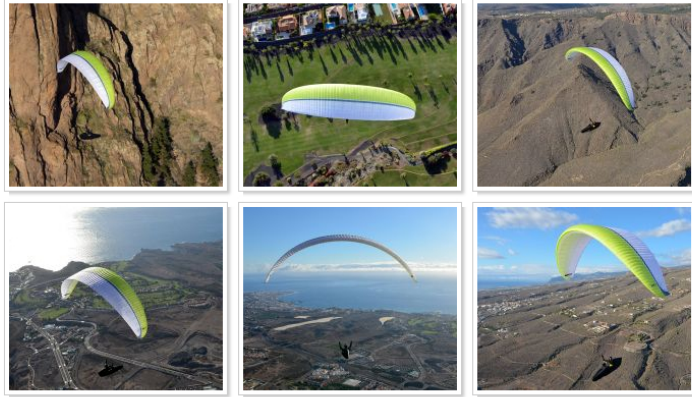
Unlimited
Rope Solutions



DOWNLOADS

- [Flug Test Meru SM \(German\)](#)
- [Flight Test Meru SM \(English\)](#)
- [Flight Test Meru M \(English\)](#)
- [Flug Test Meru M \(German\)](#)
- [Flug Test Meru L \(German\)](#)
- [Meru Line Length](#)
- [Meru Line Map](#)
- [Meru Handbuch Deutsch](#)
- [Meru Manual English](#)
- [Flight Test Meru L \(English\)](#)

IMAGE GALLERY



VIDEO



VIDEO

WATCH UP ON VIMEO



2-YEARS

CHECKS AND MORE



TEAM

CHECK OUR TEAMPILOTS



DEALER

FIND YOUR LOCAL DEALER

These are our Collaborators across the planet. Feel free to contact them in order to find a UP dealer near you!

