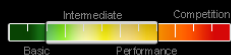


# LHOTSE<sup>2</sup>

Lighten UP your adventures!



## UP LHOTSE<sup>2</sup>

The Lhotse<sup>2</sup> is the second generation of our very successful EN-B wing in lightweight construction. It is based on the Kibo<sup>2</sup> and thanks to its light weight construction, it is the perfect companion for all H&F, bivouac, and travel adventures. The Lhotse<sup>2</sup> will amaze you in flight with its appealing, beautiful, precise handling and maneuverability. Additionally, the excellent climbing and performance will tempt you to fly more cross country. The lightweight design will impress you even more when you carry it on your shoulders.

### MORE INFO

#### What's new?

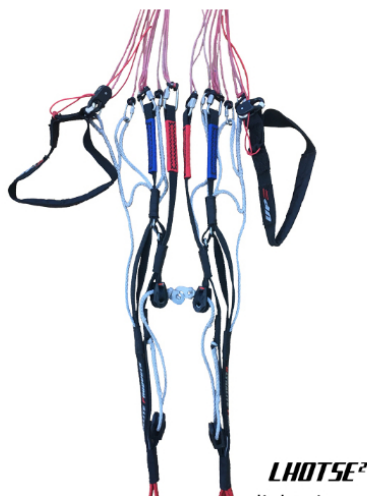
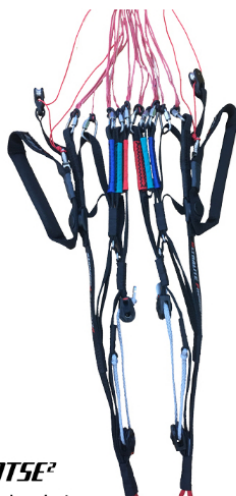
As with the Kibo<sup>2</sup>, the Lhotse<sup>2</sup> has many new technical features. The negative 3D panel shaping invented by our designer Franta Pavloušek gives our light mid-B a clean leading edge. Using technology already proven successful with our 2-line models, we have improved the performance within the B class. To achieve this, the number of cells have been increased and the rods in the leading edge are slightly longer. Like all of the latest UP glider models, the seams of the mini ribs are hidden on the Lhotse<sup>2</sup>. Compared to its predecessor, we were able to reduce the weight of our new lightweight glider between 100-200 grams. The Lhotse<sup>2</sup> will now be available in a fourth size for the lightweights among the glider pilots.

#### Who is the Lhotse<sup>2</sup> for?

Whether it is an everyday glider or a light secondary glider, the Lhotse<sup>2</sup> is a feel-good wing that will put a smile on every pilot's face. The high-quality materials are intended for regular use. Thanks to the elaborate construction of the wing and its interior, it is ideally suited for a wide range of flying activities, from local mountain and thermal flying, to cross-country flying, or for expeditions. It is suitable for pilots wanting to step up from the A or low B class as well as for safety-conscious pleasure pilots and adventurers.

#### How does it fly?

Compared to its predecessor, the Lhotse<sup>2</sup> is even easier to fly. It starts reliably even in demanding conditions in unknown terrain. In the air, it is a fun machine that delights with its maneuverability and with its speed and glide performance when crossing valleys or facing headwinds. The Lhotse<sup>2</sup> is sporty to fly and responds precisely to brake inputs. It is even more powerful, especially in moving (turbulent) air and accelerated flight than its predecessor. The Lhotse<sup>2</sup> is a glider that is easy to carry and has enough power for long-distance flights. What more do you want?

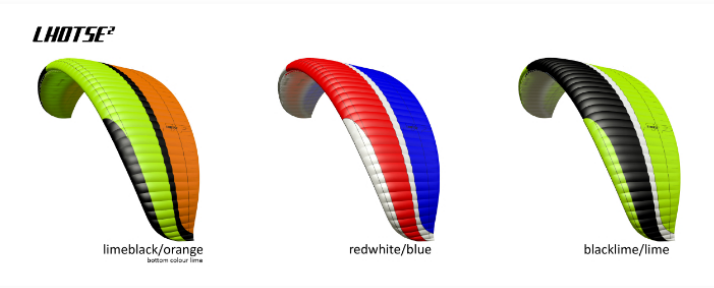


<

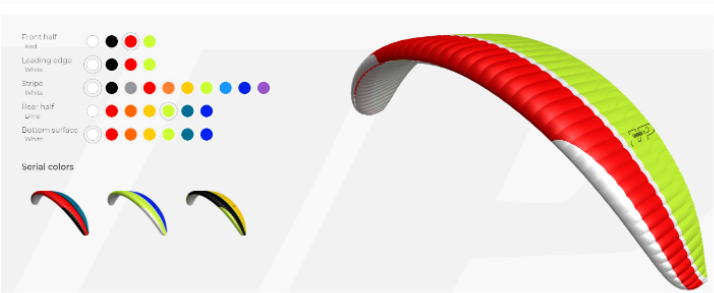
Changed scope of delivery from 01.01.2023!  
Included in the delivery: Innerbag, riser bag, compression strap, UP gift, Skytex repair patche, e-Manual.  
Backpack can be ordered optionally!

If you wish to spare more weight on your Lhotse2, you may order it with our lightweight riser (Dyneema) without any surcharge.  
[Read more about the UP Summiteer Light backpack here!](#)

STANDARD COLOURS



CUSTOMIZE YOUR PARAGLIDER



TECHNICAL DATA

SIZE	20	22	24	26
Surface area flat	19,6	21,98	24,4	26,4
Surface area projected	16,7	18,6	20,7	22,5
Flat span	10,6	11,2	11,8	12,3
Projected span	8,4	8,9	9,4	9,8
Flat aspect ratio	5,7	5,7	5,7	5,7
Projected aspect ratio	4,3	4,3	4,3	4,3
Number of chambers	53	53	53	53
Total line length incl. brake	238	253	269	280
Total # of lines incl. brake	180	180	180	180
Glider weight	2,7	2,9	3,2	3,5
Certification category LTF/EN	B	B	B	B
Total takeoff weight (kg)	58-75	65-85	75-100	90-115

Need help finding the right size for you? [Click here](#)

\*) As with all wings, increasing or decreasing the wing loading will affect the in-flight dynamics. All Lhotse sizes have a very wide weight range in order to accomodate typical hike&fly needs, where on some days you may be just yourself and a wing, running up a mountain to fly down, on other days you may want to carry several days' worth of provisions and equipment, and both scenarios are covered in the weight range. The heavier you load the wing, the more dynamic a ride you can expect.

Need help finding the right size for you? [Click here](#)

MATERIALS

Location	Material
Top surface front	Porcher Skytex 32 Universal
Narrow stripe top	Porcher Skytex 38 Universal
Broad stripe top	Porcher Skytex 27 Classic
Top surface rear	Porcher Skytex 27 Classic
Bottom surface	Porcher Skytex 27 Classic

Bottom surface	Porcher Skytex 2 / Classic
Cell walls	Porcher Skytex 27 Hard
Gallery lines	Liros DC120 (Dyneema unsheathed), Edelrid 8000U-130/090/070 (Aramid unsheathed)
Middle lines	Edelrid 8000U-130 (Aramid unsheathed)
Main lines	Edelrid 8000U-230/130 (Aramid unsheathed)
Brake lines	Cousin 989-2,1 (Dyneema sheathed), Edelrid 8000U-130 (Aramid unsheathed)

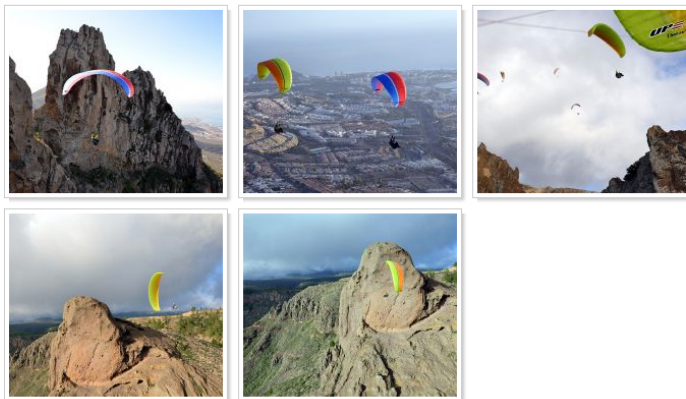
porcherindustries  
CONFIDENCE MAKES THE DIFFERENCE



#### DOWNLOADS

[Flug Test Lhotse 2 24 \(German\)](#)  
[Flug Test Lhotse 2 22 \(German\)](#)  
[Flug Test Lhotse 2 20 \(German\)](#)  
[Flight Test Lhotse 2 26 \(English\)](#)  
[Flight Test Lhotse 2 24 \(English\)](#)  
[Flight Test Lhotse 2 20 \(English\)](#)  
[Flight Test Lhotse 2 22 \(English\)](#)  
[Flug Test Lhotse 2 26 \(German\)](#)  
[Manual Lhotse 2 \(English\)](#)  
[Handbuch Lhotse 2 \(Deutsch\)](#)  
[Line Map Lhotse2](#)  
[Leinenlängen /Linelength](#)

#### IMAGE GALLERY



#### VIDEO



#### VIDEO

WATCH UP ON VIMEO



#### 2-YEARS

CHECKS AND MORE



#### TEAM

CHECK OUR TEAMPILOTS



#### DEALER

FIND YOUR LOCAL DEALER

These are our collaborators across the planet. Feel free to contact them in order to find a UP dealer near you!

