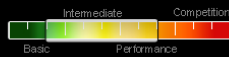


LHOTSE

Lighten UP your adventures!



UP LHOTSE - THE ADVENTURE PARAGLIDER

The new UP Lhotse (EN B) sits between the UP Kibo and the UP Summit XC Series in the UP model range - but as a lightweight hike&fly and adventure glider it is so much more than just a new mid-level EN B wing!

In order to be able to concentrate on the adventure at hand, you need a wing that won't let you down in any way. The new UP Lhotse is such a wing; it has all the performance you need for long XC adventures in the backcountry regions of our beautiful planet, it is built light, and it is tough enough to withstand the challenges out there.

- ✓ A light but strong design, weighing just 3.3kgs in the M size
- ✓ Ideal glider for hike&fly adventures at home and abroad
- ✓ Easy to pack even in tight spots, using either the new UP Parasleeve or any traditional method
- ✓ Very easy launching in all conditions, to make your para-alpinism adventure safer and more fun
- ✓ Minimalistic but very efficient risers made from a combination of Kevlar-reinforced 12mm Nylon webbing and Dyneema cord
- ✓ Glide performance to make those big valley crossings in real conditions a breeze
- ✓ New Generation Aerofoil (NGA) for a solid leading edge and great penetration in turbulence
- ✓ Very stable even at top speed due to our Nylon Front Section Support system (FSS)
- ✓ Precise, linear handling similar to the high- performance UP models
- ✓ C-riser controllable
- ✓ 2. generation Brakeline Tensioning System (BTS2) for better handling with less line consumption
- ✓ Mini-rib canopy construction
- ✓ Light and efficient speed system with Ronstan™ pulleys
- ✓ Double 3D panel shaping technology - less wrinkles, less drag
- ✓ Half-moon shaped cell openings - maximum leading edge integrity, minimal drag
- ✓ Safe, predictable flare to make landing in a tight spot easy and relaxing
- ✓ 3 sizes, covering hook-in weights from 65kgs to 120kgs**

MORE INFO

More and more pilots are rediscovering the roots of paragliding, by shouldering their lightweight rigs and walking up mountains or hills, to fly down in gentle morning air or to start mindboggling XC adventures across long stretches of new territory. Regardless of your particular taste in Airborne Sensations, the new UP Lhotse is just what you need for the job!

With the new UP Lhotse, going on your next airborne adventure just got a whole lot easier. Being both compact and light-weight, the Lhotse is an ideal travel companion regardless of your chosen mode of transportation. It could take you on single- or multi-day adventures in your local mountain range, or it could be your preferred daily toy at home on the local hill or tow paddock.

The Lhotse is built to perform and handle like a higher-rated glider, but as with all UP wings it isn't the kind of glider that comes out and bites you when you need it the least. Its precise, linear handling will make exploiting the lift you encounter along the way into pure bliss, and once you have reached the top of the thermal just sit back and enjoy the impressive gliding performance, or push the light-but-efficient speed bar to go somewhere exciting in a hurry.

The Lhotse is light on your back as well as on your wallet, not least when checking it into the hold on commercial airline flights - or you could just carry it on board as cabin luggage. Weighing just 3.3kgs (M size) your carry-on bag will even take a lightweight harness, provided you manage to pack both of them small enough!

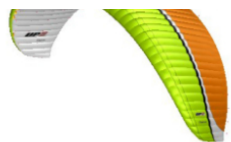
In the box: Summiteer Light Backpack in size S for all sizes, innerbag S size, compression strap, UP gift, UP sticker.

[Read more about the UP Summiteer Light backpack here!](#)

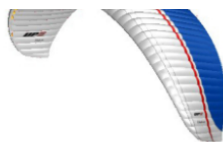
STANDARD COLOURS

Lhotse





Lime/Orange



White/Blue

TECHNICAL DATA

SIZE	S	M	L
Surface area flat	22,8	24,8	26,9
Surface area projected	19,2	21	22,7
Flat span	11,5	12,0	12,5
Projected span	8,9	9,3	9,7
Flat aspect ratio		5,7	
Projected aspect ratio		4,1	
Number of chambers		49	
Total line length incl. brake	253	265	275
Total # of lines incl. brake		138	
Glider weight	3,0	3,3	3,6
Certification category	LTF/EN B	LTF/EN B	LTF/EN B
Total takeoff weight	60-90*	75-100*	85-120*

Need help finding the right size for you? [Click here](#)

*) As with all wings, increasing or decreasing the wing loading will affect the in-flight dynamics. All Lhotse sizes have a very wide weight range in order to accomodate typical hike&fly needs, where on some days you may be just yourself and a wing, running up a mountain to fly down, on other days you may want to carry several days' worth of provisions and equipment, and both scenarios are covered in the weight range. The heavier you load the wing, the more dynamic a ride you can expect.

Need help finding the right size for you? [Click here](#)

MATERIALS

Location	Material
Top surface front	Porcher Skytex 32 Universal
Narrow stripe top	Porcher Skytex 38 Universal
Broad stripe top	Porcher Skytex 27 Classic
Top surface rear	Porcher Skytex 27 Classic
Bottom surface	Porcher Skytex 27 Classic
Cell walls	Porcher Skytex 27 Hard
Gallery lines	Liros DC120 (Dyneema unsheathed), Edelrid 8000U-130/090/070 (Aramid unsheathed)
Middle lines	Edelrid 8000U-130 (Aramid unsheathed)
Main lines	Edelrid 8000U-230/130 (Aramid unsheathed)
Brake lines	Cousin 989-2,1 (Dyneema sheathed), Edelrid 8000U-130 (Aramid unsheathed)

porcherindustries
CONFIDENCE MAKES THE DIFFERENCE

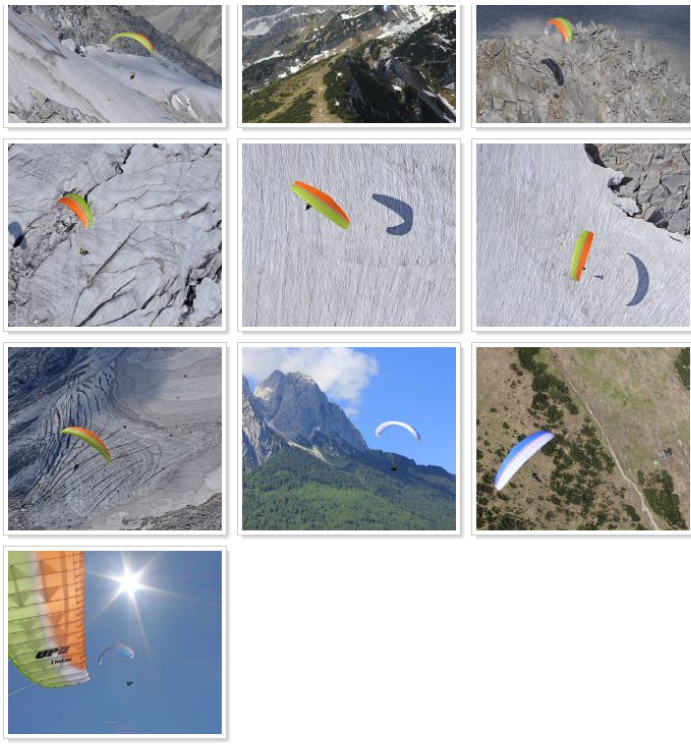


DOWNLOADS

[Lhotse manual English](#)
[Lhotse Handbuch deutsch](#)
[Lhotse Line Map](#)
[Lhotse Line Length](#)
[Flight Test Lhotse S \(English\)](#)
[Flight Test Lhotse M \(English\)](#)
[Flight Test Lhotse L \(English\)](#)
[Flug Test Lhotse S \(Deutsch\)](#)
[Flug Test Lhotse M \(Deutsch\)](#)
[Flug Test Lhotse L \(Deutsch\)](#)

IMAGE GALLERY





VIDEO



VIDEO

WATCH UP ON VIMEO



2-YEARS

CHECKS AND MORE



TEAM

CHECK OUR TEAMPILOTS



DEALER

FIND YOUR LOCAL DEALER

These are our collaborators across the planet. Feel free to contact them in order to find a UP dealer near you!

