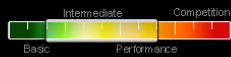


# KIBO 2

Intermediate All-rounder



## THE DELIGHT OF FREE FLIGHT

We are introducing the new **Kibo<sup>2</sup>** which comes as the successor of the very successful intermediate glider, the Kibo.

All sorts of technical refinements have been implemented, which makes our hybrid three liner a fun to fly glider with decent performance and high passive safety. Besides the improved pitch stability, the handling is more agile now, just perfect to use the upwind in most efficient way. Of course, the Kibo<sup>2</sup> retains the excellent feedback and comfort of its predecessor, making it the ideal wing even for demanding conditions.

### MORE INFO

#### What's new?

Compared to its predecessor, the Kibo<sup>2</sup> flies even calmer and its handling feels more direct. Due to the slightly softer canopy, we were able not only to increase the passive safety significantly but also improve the wings feedback. Thanks to this enhancement you will not only feel the thermals immediately when entering them, but also you will experience how easy you can find the cores of the upwinds. In addition, we implemented the extremely efficient speed system from our Trango X-Race. This feature will definitely make you smile while flying on distance. In order to be able to offer greater performance combined with improved safety, we have incorporated our know-how from high-performance development (Meru, Guru) into the creation of the Kibo<sup>2</sup>. This includes positive and negative 3-D panel shaping to create an extremely clean and low-drag leading edge. Thanks to the new Snaplock, we were able to realize your desire for a better attachment of the brake handles. The mix between a magnet and popper combines the advantages of both models. Worn out poppers and weak magnets are no longer of concern thanks to Snaplock.

#### Who is the Kibo<sup>2</sup> for?

Like its predecessor, the Kibo<sup>2</sup> is positioned in the middle B-segment. Kibo pilots will immediately feel comfortable flying the Kibo<sup>2</sup>.

Because of its excellent climbing ability and outstanding glide performance in this class, the Kibo<sup>2</sup> is not only for pilots who like to stay on their home mountain but also for everybody who enjoys the experience of extended XC flights. A true all-rounder! This makes the Kibo<sup>2</sup> the perfect choice for all who want to move up from the A-Class as well as for advanced, safety-conscious and frequent pilots. The Kibo<sup>2</sup> offers you a high level of comfort and reliability combined with a good dose of performance.

#### How does the Kibo<sup>2</sup> fly?

Take off: Similar to its predecessor, the Kibo<sup>2</sup> can be easily launched in any situation. The glider rises symmetrically until it stops above the pilot where it waits to get the final impulse to take off.

In the Air: The Kibo<sup>2</sup> is direct on brake and very agile without being nervous. The sophisticated canopy with its moderate aspect ratio is great fun to fly and just a little easier than its predecessor!

Need help finding the right size for you? [Click here](#)

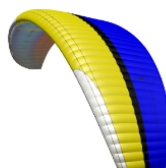
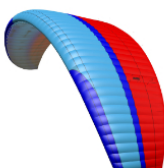
Changed scope of delivery from 01.01.2023!

Included in the delivery: Innerbag, riser bag, compression strap, UP gift, Skytex repair patche, e-Manual.  
Backpack can be ordered optionally!

[Read more about the UP backpack here!](#)

### STANDARD COLOURS

KIBO<sup>2</sup>



## CUSTOMIZE YOUR PARAGLIDER



## TECHNICAL DATA

SIZE	S	S/M	M	L
Surface area flat	21,9	24,4	26,4	28,1
Surface area projected	18,6	20,7	22,5	23,9
Flat span	11,2	11,8	12,3	12,7
Projected span	8,9	9,4	9,8	10,1
Flat aspect ratio			5,7	
Projected aspect ratio			4,3	
Number of chambers			53	
Total line length incl. brake	253	269	280	290
Total # of lines incl. brake			180	
Glider weight	4,2	4,5	4,8	5,1
Certification category EN/LTF	B	B	B	B
Total takeoff weight	65-85	75-95	85-110	100-130

Need help finding the right size for you? [Click here](#)

## MATERIALS

Location	Material
Top surface front	Porcher Skytex 38 Universal
Narrow stripe top	Porcher Skytex 38 Universal
Broad stripe top	Porcher Skytex 38 Universal
Top surface rear	Porcher Skytex 38 Universal
Bottom surface	Dominico DOKDO 30 DMF (WR)
Cell walls	Porcher Skytex 40 Hard / Dominico DOKDO 30 DMF (WR)
Gallery lines	Liros DC120 (Dyneema unsheathed), Edelrid 8000U-130/090/070 (Aramid unsheathed)
Middle lines	Edelrid 8000U-130 (Aramid unsheathed)
Main lines	Edelrid 7950-200/150 (Dyneema sheathed)
Brake lines	Cousin 989-2,1 (Dyneema sheathed), Edelrid 8000U-130 (Aramid unsheathed)

**porcherindustries**  
CONFIDENCE MAKES THE DIFFERENCE

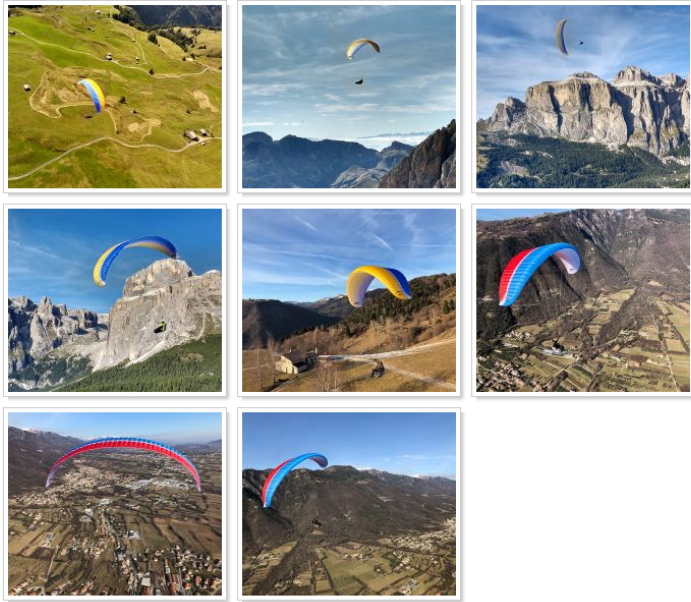
Strongest & Lightest  
**DOMINICO**  
**TEXTILE**  
Korea made



## DOWNLOADS

Flug Test Kibo 2 L (German)  
 Flug Test Kibo 2 M (German)  
 Flug Test Kibo 2 SM (German)  
 Handbuch Kibo 2 (Deutsch)  
 Flug Test Kibo 2 S (German)  
 Flight Test Kibo 2 L (English)  
 Flight Test Kibo 2 M (English)  
 Flight Test Kibo 2 SM (English)  
 Flight Test Kibo 2 S (English)  
 Kibo 2 Thermik Magazine Test (German). © THERMIK Magazin  
 Kibo 2 Line Lenght

IMAGE GALLERY



VIDEO



VIDEO

WATCH UP ON VIMEO



2-YEARS

CHECKS AND MORE



TEAM

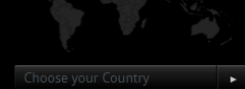
CHECK OUR TEAMPILOTS



DEALER

FIND YOUR LOCAL DEALER

These are our collaborators across the planet. Feel free to contact them in order to find a UP dealer near you!



Choose your Country